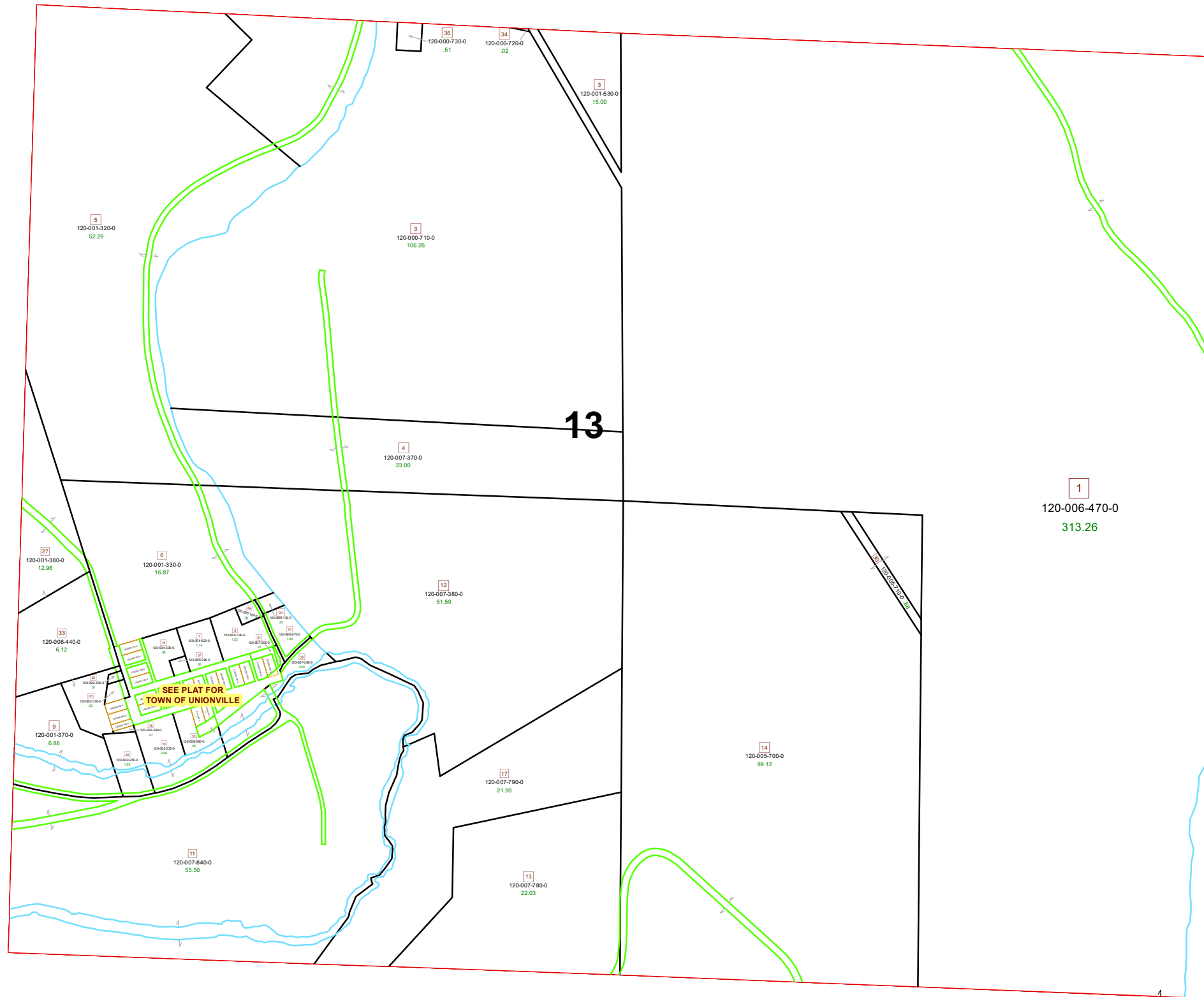
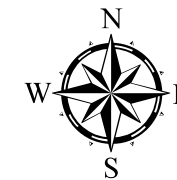


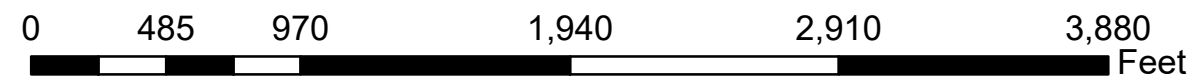
MEIGSVILLE TOWNSHIP SECTION 13 R11 TWP 10 MORGAN COUNTY, OHIO



PIN	VOL	PAG	Owner	LegalDescr	Acres
120-600-070-0			CEMETERY (UNIONVILLE)	R11 T10 S13 LOT 2	1
120-600-130-0			CHURCH & CEMETERY UNIONVILLE	R11 T10 S13 0	0.25
120-001-370-0	OR230	1	CNX LAND LLC	R11 T10 S13 SD 9 F	6.88
120-001-380-0	OR230	1	CNX LAND LLC	R11 T10 S13 SD 27	12.96
120-001-530-0	OR230	1	CNX LAND LLC	R11 T10 S13 SD 3 D	15
120-001-330-0	OR230	1	CNX LAND LLC	R11 T10 S13 SD 5-6	16.87
120-001-320-0	OR230	1	CNX LAND LLC	R11 T10 S13 SD 5	52.29
120-000-730-0	OR230	1	CONSOLE MINING COMPANY LLC	R11 T10 S13 SD 36	0.51
120-000-710-0	OR230	1	CONSOLE MINING COMPANY LLC	R11 T10 S13 SD 3 E	106.26
120-007-780-0	OR161	261	EUBANK DAVID E & GINGER G	R11 T10 S13 SD 13	22.03
120-007-790-0	OR161	261	EUBANK DAVID E & GINGER G	R11 T10 S13 SD 17	21.9
120-007-840-0	OR161	261	EUBANK DAVID E & GINGER G	R11 T10 S13 SD 11	55.5
120-006-470-0	OR234	3673	OHIO FRANKLIN REALTY LLC	R11 T10 S13 SD 1	313.26
120-006-440-0			OHIO POWER COMPANY ATTN: TAX	R11 T10 S13 SD 33	6.12
120-005-700-0	D.V	204 87	PONCHAK ALAN L & BRENDA L	R11 T10 S13 SD 14	99.12
120-005-710-0	D.V	204 87	PONCHAK ALAN L & BRENDA L	R11 T10 S13 SD 30	0.88
120-007-370-0	OR202	1163	ROBERTS CONNIE L & PEGGY ANN	R11 T10 S13 SD 4	23
120-007-290-0	OR202	1163	ROBERTS CONNIE L & PEGGY ANN	R11 T10 S13 SD 26	2
120-007-300-0	OR202	1163	ROBERTS CONNIE L & PEGGY ANN	R11 T10 S13 SD 21	0.25
120-007-380-0	OR202	1163	ROBERTS CONNIE L & PEGGY ANN	R11 T10 S13 SD 12	51.59
120-005-140-0	OR226	1965	SIMMONS LATRISHA	R11 T10 S13 SD 8	1.519
120-000-100-0	OR231	4266	SIMMONS SLADE A AND LATRISHA	R11 T10 S13 SD 38	0.301
120-002-250-0	OR155	423	SMITH DONALD J & KELLY M	R11 T10 S13 SD 24	1.63
120-002-240-0	OR155	423	SMITH DONALD J & KELLY M	R11 T10 S13 SD 18	0.07
120-002-190-0	OR215	571	SMITH DONALD J & KELLY M	R11 T10 S13 SD 25	0.03
120-002-200-0	OR215	571	SMITH DONALD J & KELLY M	R11 T10 S13 SD 23	0.01
120-002-230-0	OR155	423	SMITH DONALD J & KELLY M	R11 T10 S13 SD 10	2.961
120-009-130-0	D.V	206 116	SMITH DONALD J & KELLY M	UNIONVILLE SD IN L	0
120-009-060-0	OR215	571	SMITH DONALD J & KELLY M	UNIONVILLE SD IN L	0
120-009-070-0	OR215	571	SMITH DONALD J & KELLY M	UNIONVILLE SD IN L	0
120-005-090-0	D.V	203 729	SMITH DONALD J & KELLY M	R11 T10 S13 SD 37	0.196
120-004-530-0	D.V	193 189	SMITH DONALD J & KELLY M	R11 T10 S13 SD 19	0.961
120-004-620-0	D.V	193 189	SMITH DONALD J KELLY M	R11 T10 S13 SD 7 S	1.14
120-008-090-0	OR232	1705	W & E PROPERTIES LLC & SMEDLEY	R11 T10 S13 SD 35	0.951



Boundaries			
	Hydro		Section
	Roads		Lot
	County		Parcel
	Township		ROW



Disclaimer: The information that these maps contains is for reference purposes only. Please bring any errors to the attention of the Engineer's Office staff. Thank you